

Congratulations on purchasing your new JUNO®bed

- Safely classic

You have made a good choice with the new JUNO® infant- & children's bed, which can be used from your child's infancy all the way to about 7 years of age - without purchasing additional parts.

The new JUNO®bed is a Danish product developed in co-operation with, and approved by The Danish Technological Institute, and is furthermore GS-approved by the German LGA institute. It is not without reason we call the bed "safely classic".

In this little leaflet we will tell you how the bed is assembled, used and maintained. And how you can easily change it from being an infant's bed, to be a bed for a preschool child. This also means that you can use the JUNO®bed for many years to come - so we hope it will be a delight for both the young and the grown.



WARNING: Be wary of the risk in keeping open fire, or other powerful sources of heat near the JUNO®bed, such as electric heaters, gas heaters, etc.

Term of use: From infancy to 7 years of age.

Outside measurements: 70 x 115 cm, 70 x 135 cm and 70 x 150 cm.

Materials: Solid beech and plates of beech veneer. Approved varnish and paint.

Mattress: Pantéra, not susceptible to moisture, fire-retardant, 100% recyclable, meets all standards in MVSS 302 and California 117-BA + D.

Testing and Marking: Approved by EN 716-1:1995 & German GS:

DIN EN 716:1995-1 and 2, DIN 71-3:1994 and DIN 53160.

Design:

Annette Parbst Sørensen

Producer:

JUNO ApS

Ringstedvej 20

DK-4520 Svinninge

<http://www.alt-til-baby.dk>

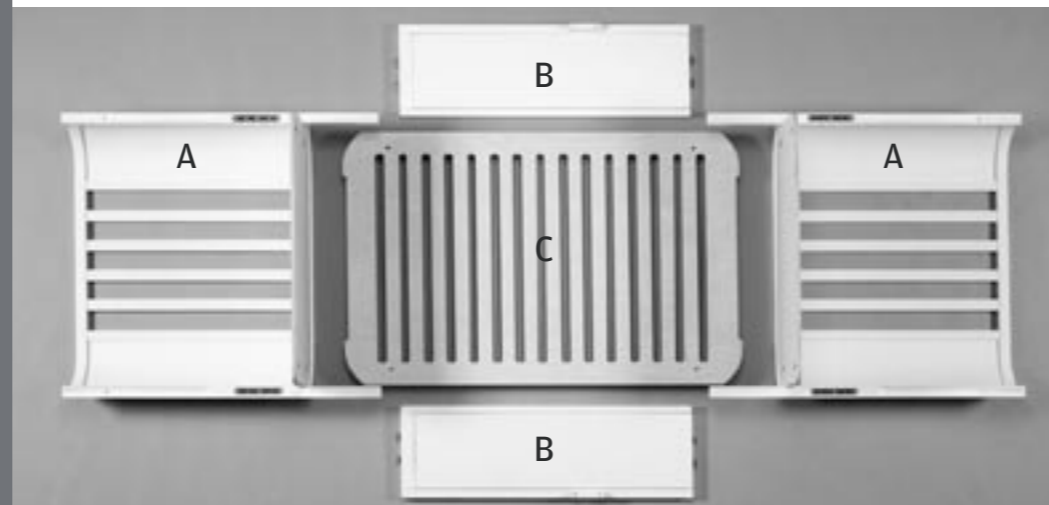
E-mail: info@alt-til-baby.dk

Contents:

A: 2 end panels / B: 2 bedsides / C: 1 base

2 windows* / 2 bed linings* / 4 mattress pieces* / Fittings and screws*.

*) Not shown on picture



www.plus-grafik.dk

Usage and assembly guide for the JUNO®bed



JUNO

JUNO ApS

Ringstedvej 20

DK - 4520 Svinninge

Tel:

+45 59 26 10 56

Fax:

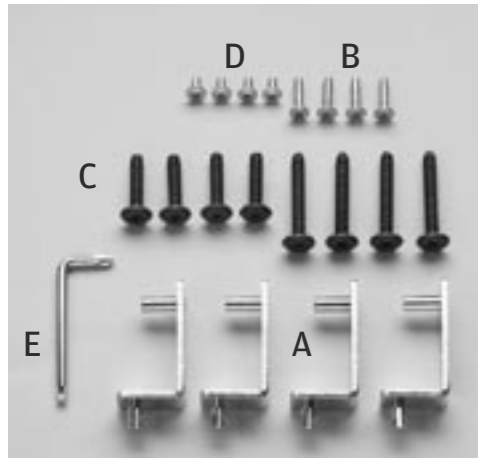
+45 59 26 10 49

info@alt-til-baby.dk

www.alt-til-baby.dk

JUNO

Usage and assembly guide for the JUNO®bed



Screw and fitting overview

- A: 4 raised-base fittings
- B: 4 locking screws for the bedside
- C: 8 screws for the base
- D: 4 screws for the base fittings
- E: 1 combination tool

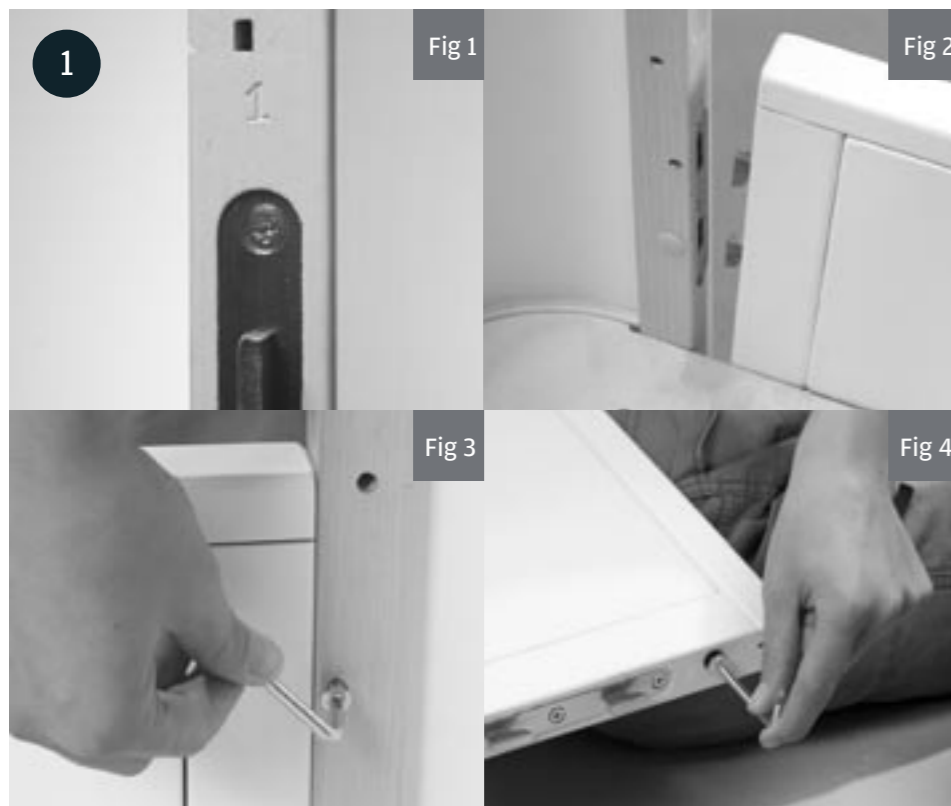
1. How to assemble the JUNO®bed

- Place the bedside in the fittings on one end panel, so that the number “1” on the bedside matches the number “1” on the end panel, see fig. 1.
- Press in and down.
- Drive in the locking screw, see fig. 2.

NB: If you are having trouble with the locking screw, the fitting may not be completely fixed. This may be caused by the large screw in the opposite end of the bedside being too tight. Try loosening it, then insert the locking screw.

- Place the other bedside in the same way, matching “2” to “2”.
- Place the remaining end panel in the same way, pressing in and down.

IMPORTANT: Remember all 4 locking screws (See B on fitting overview). Always remember to completely drive in all screws, so that there is no risk of the child getting snagged.

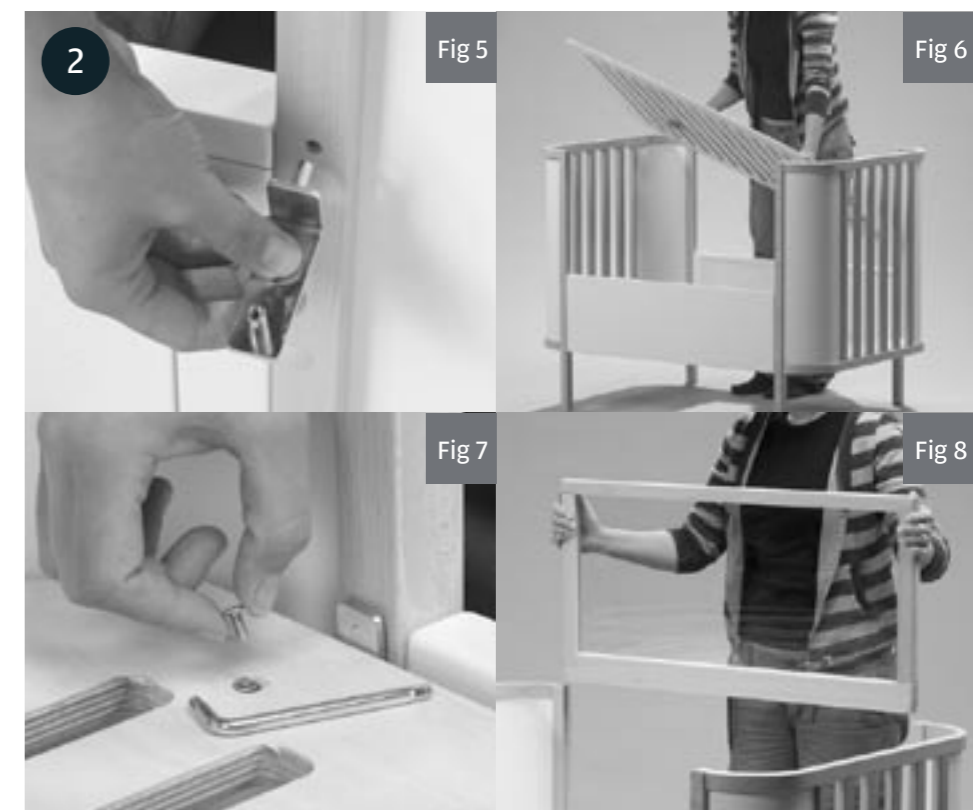


2. How to raise the bottom

- Insert the 4 base fittings (See A on fitting overview) in the holes on the inside of the end panels, see fig. 5.
 - Place the bottom inside, so that the fittings go through the holes, see fig. 6.
 - Drive in the 4 base-fitting screws (See D on fitting overview), see fig. 7.
 - Apply the windows by sliding them into the ruts in both end panels, see fig. 8.
- IMPORTANT: Both ruts MUST fit with their folds. You should not be able to raise the windows again without pulling reasonably hard with both hands.**
- Put the large and the small pieces of mattress with the rounded corners in the bed, soft side up.
- IMPORTANT: For the child’s safety there must be at least 20 centimetres from the sleeping surface to the upper edge of the bed. One leg of the end panel has a small mark, showing this height. The height of the mattress must never go above this mark!**
- Place the bed linings against each other at the headboard, and push them together in the opposite side.
- REMEMBER! Always make sure that the removable side is in and locked, when the bottom is raised!**

Now, the JUNO®bed is ready for use - and to receive its new inhabitant.

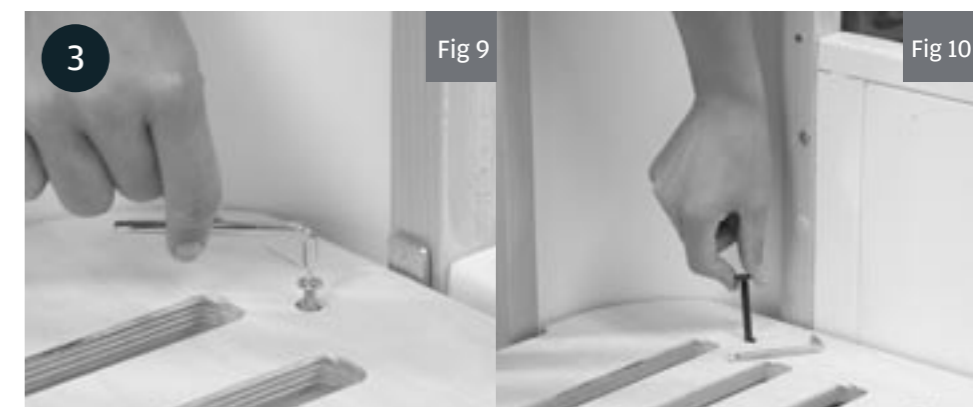
IMPORTANT: As soon as the child can sit up by itself, the bottom should be lowered to the lowest position. This ensures maximum safety.



3. How to lower the bottom

- Remove the mattresses.
- Remove the screws for the base fittings, then the fittings themselves, see fig. 9.
- Place the bottom on the supports in the end panels.
- Drive in the 4 long bottom screws (See C on fitting overview) from the top, see fig. 10.
- Put in the mattress.
- Store all fittings and screws.

Please be wary of the danger in leaving objects in the JUNO®bed on which the child can stand, or which may hold a danger of choking.



4. How to make the JUNO®bed longer

- Remove the mattresses.
- Remove the locking screws from both bed sides, see fig. 11.
- Pull both bed sides out of the fittings.
- Remove the 2 locking screws from the sides of the bed sides, 1 screw per bedside, see fig. 12.
- Assemble the bed sides again, see “How to assemble the JUNO®bed”.
- Remove the 2 long bottom screws in the foot end of the bed.
- Hold the bed panel - by the sides - and pull steadily until the bottom falls into place, see fig. 13.
- Drive the 2 short screws into the new holes, see fig. 14.
- The bottom will now be slightly slanted, but this will not affect the comfort of your child.
- Turn the mattresses so they correspond to the weight of the child.
- Now place the small piece of mattress by the foot of the bed, so that as few joints as possible lie beneath the head and back.
- Next extension is similar, but from the opposite end.
- Exchange the two long bottom screws with the two short ones.
- Exchange the small oblong piece of mattress with the bigger one.

